



# Model 644E-42 TELEHANDLER

## Performance

- Rated Capacity**  
6,000 lb (2,722 kg)
- Maximum Lift Height**  
42 ft (12.8 m)
- Frame Leveling**  
12 degrees
- Lift Speed (boom retracted)**  
Up: 12.5 sec  
Down: 11.5 sec
- Boom Speed (no load)**  
Extend: 12.5 sec  
Retracted: 13.5 sec
- Travel Speed Forward**  
20 mph (32 kmph) max.
- Drawbar Pull (loaded)**  
18,600 lb (8,437 kg)
- Operating Weight** With 50 in. Carriage and Forks  
24,467 lb (11,098 kg)
- Forward Reach**  
35 ft 6 in. (10.8 m)
- Horizontal Load Placement**  
80 in. (2.0 m)

## Standard Specifications

- Engine**
  - Make and Model Cummins B4.5T Turbo
  - Fuel Diesel
  - Cycles 4
  - No. of Cylinders 4
  - Displacement 276 cu in (4.5 L)
  - Torque Rating 305 lb ft (414 Nm)  
@ 1,500 rpm
  - Rated Speed 2,500 rpm
  - Max. Gross BHP 99 hp (74 kW)
  - Fuel Tank 46 gal (174 L)
- Engine Filters**
  - Two-stage centrifugal air cleaner.
  - Serviceable fuel filter/water separator.
  - Full-flow replaceable-element engine oil filter.
- Electrical System**
  - Voltage: 12V
  - Alternator: 65 amp
  - Battery: 850 cold cranking amps at 0°F
- Transmission**
  - Modulated powershift with integral full gear-drive dropbox.
  - 4-speed forward and 3-speed reverse.

## Axles

Full-time planetary 4-wheel drive.  
Limited slip front differential.  
Stabil-Trak rear axle stability system.

## Service Brakes

Inboard mounted internal wet disc brakes.

## Parking Brakes

Spring applied, hydraulically released parking brake with transmission declutch feature.

## Tires

Standard: Air Filled 13:00x24 — 12 ply

## Fenders

## Cab

Certified ROPS/FOPS structure.  
Steering wheel mounted horn and back-up alarm.  
Rear view mirrors.

## Steering

4-wheel circle, 4-wheel crab, 2-wheel front.

## Instruments

Hydraulic oil temperature, fuel level, tachometer, and hourmeter gauges.  
Warning indicators for transmission oil temperature, hydraulic oil temperature, engine oil pressure, alternator charging, air filter restriction, hydraulic oil filter restriction, and low brake pressure.  
Indicators for parking brake, and Stabil-Trak System.

## Controls

Multi-function, fully proportional pilot operated joystick controls for boom functions, carriage tilt, auxiliary control, frame leveling, and horizontal load placement system.

## Hydraulic System

Load sensing dual gear pump.  
50.2 gal (190 L) system capacity.

## Auxiliary Hydraulics

Used for all attachments equipped with cylinders or other hydraulic components.  
Consists of valves, controls and hydraulic lines.

## Accessories & Options

### Enclosed Cab

### Air Conditioning

### Cold Weather package

### Work Lights

### Road Lights

### Rotating Beacon

### Light Packages

### Tire Options

- Foam-filled
- Rock
- Solid

## Attachments

### Standard Carriage

50 in. (1.3 m) or 60 in. (1.5 m) or 72 in. (1.8 m)

### Side Tilt Carriage

50 in. (1.3 m) or 60 in. (1.5 m) or 72 in. (1.8 m)

### Swing Carriage

72 in. (1.8 m); 90 degrees

### Tower

8 ft (2.4 m), 50 in. (1.3 m) Standard Carriage

### Pallet Forks

- 2.36 x 4 x 48 in. (60 mm x 102 mm x 1.2 m)
- 2.36 x 5 x 48 in. (60 mm x 127 mm x 1.2 m)
- 2.00 x 6 x 72 in. (51 mm x 152 mm x 1.8 m)

### Lumber Forks

- 1.75 x 7 x 60 in. (44 mm x 178 mm x 1.2 m)
- 2.36 x 6 x 60 in. (60 mm x 152 mm x 1.5 m)

### Cubing Forks

2 x 2 x 48 in. (51 mm x 51 mm x 1.2 m)

### Material Bucket

- 72 in. (1.8 m), 1.0 cu yd (0.76 m<sup>3</sup>)
- 96 in. (2.4 m), 1.5 cu yd (1.15 m<sup>3</sup>)
- 102 in. (2.6 m), 2.0 cu yd (1.53 m<sup>3</sup>)

### Grapple Bucket

96 in. (2.4 m), 1.75 cu yd (1.34 m<sup>3</sup>)

### Truss Boom

- 12 ft (3.7 m), 2,000 lb (907 kg) capacity
- 15 ft (4.6 m), 2,000 lb (907 kg) capacity
- 12 ft (3.7 m) with winch, 2,000 lb (907 kg) capacity

### Fork Mounted Work Platform

8 ft (2.4 m), 1,000 lb (455 kg) capacity

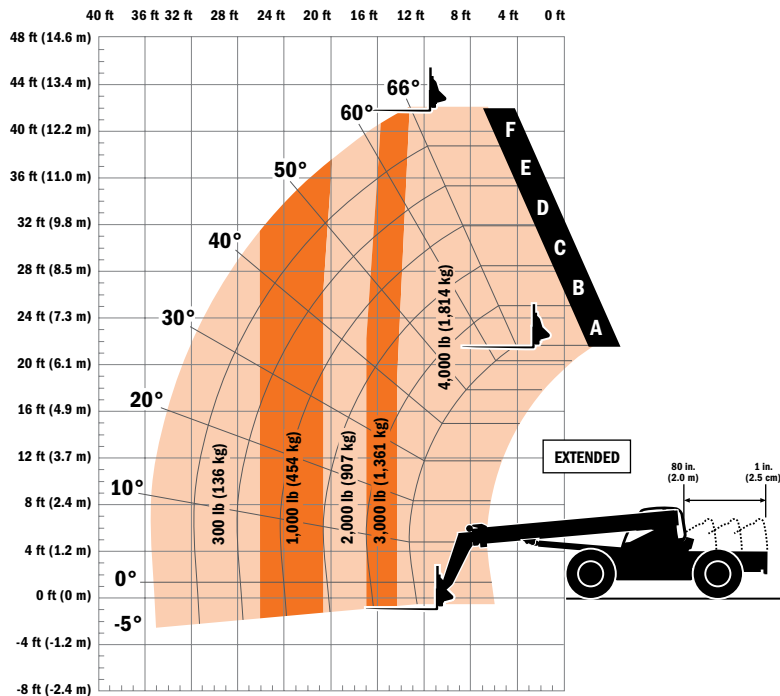
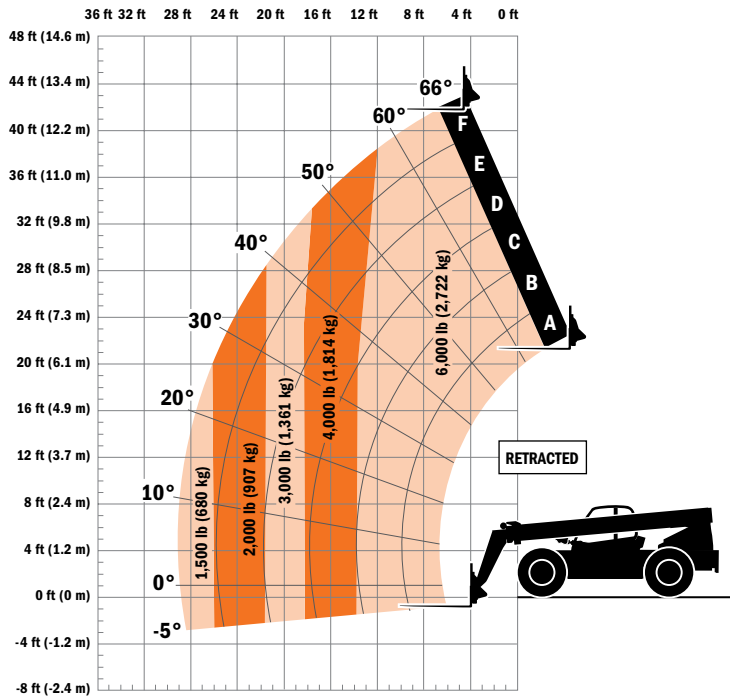
### Lifting Hook



# Model 644E-42 TELEHANDLER

## Dimensions

Length (less forks)	253 in. (6.43 m)
Width	98 in. (2.48 m)
Height	95.5 in. (2.43 m)
Wheelbase	131 in. (3.32 m)
Ground Clearance	16 in. (406 mm)
Outside Turning Radius	148 in. (3.75 m)
Max. Reach from Front Tires to 24 in. (609 mm)	
Load Center	35.5 ft/29 ft (10.82 m/8.83 m)



## IMPORTANT

Rated lift capacities shown are with machine equipped with carriage and pallet forks. The machine must be level on a firm surface with undamaged, properly inflated tires. Machine specifications and stability are based on rated lift capacities at specific boom angles and boom lengths. (If specifications are critical, the proposed application should be discussed with your dealer.)

DO NOT exceed rated lift capacity loads, as unstable and dangerous machine conditions will result.

DO NOT tip the machine forward to determine the allowable load.

Use only JLG approved attachments with proper material handler model/attachment load capacity charts displayed in the operator's cab. OSHA requires all rough terrain forklift operators be trained according to OSHA 29 CFR 1910.178 (1).



## JLG Industries, Inc.

1 JLG Drive  
 McConnellsburg, PA 17233-9533  
 Telephone 717-485-5161  
 Toll-free in US 877-JLG-LIFT  
 Fax 717-485-6417  
[www.jlg.com](http://www.jlg.com)

An Oshkosh Corporation Company

Due to continuous product improvements, JLG Industries reserves the right to make specification and/or equipment changes without prior notification. This machine meets or exceeds ASME B56.6-2005 as originally manufactured for intended applications.

Form No.: SS-L644E-42-0104-15M  
 Part No.: 3132500  
 Printed in USA  
 R071003